

# KHSAA Basketball - Game Box Score

## Elizabethtown Lady Panthers vs. Henderson County Lady Colonels

**Date: 03/14/2009 Time: 12:15 pm CST Site: Diddle Arena-Bowling Green, KY Attendance: 4654**

### Visitors: Henderson County Lady Colonels

##	Name	P	FG	3 Pt	FT	PTS	ORB	DRB	TR	PF	AST	TO	BS	ST	MIN
10	* Ariel Barnes		1/6	0/1	1/2	3	0	1	1	2	1	1	0	1	30:41
12	Kayla Jennings		0/0	0/0	0/0	0	0	0	0	0	0	0	0	0	1:19
14	Ellie Fruit		0/0	1/2	0/0	3	0	0	0	0	0	0	0	0	1:19
15	* Krista Norman		2/4	0/1	0/0	4	1	1	2	0	0	1	0	0	30:41
20	Lauren Rodgers		0/0	0/0	0/0	0	0	0	0	0	0	0	0	0	0:58
22	* Olivia Fruit		0/1	1/5	3/3	6	1	2	3	1	0	1	0	1	28:16
23	Alexia Langley		0/0	0/0	0/0	0	0	0	0	0	1	0	0	0	1:19
24	Sara Garrett		2/4	0/0	0/0	4	0	1	1	1	0	1	0	0	11:16
30	Kristen Oliver		0/1	0/0	0/0	0	0	0	0	0	0	0	0	0	0:41
32	* Danielle Dixon		1/11	0/0	1/4	3	4	4	8	2	2	2	0	0	31:19
33	Chelsea Stone		0/0	0/0	0/0	0	0	0	0	0	0	0	0	0	0:41
44	Breasha Bostic		0/0	0/0	0/0	0	0	0	0	0	0	0	0	0	DNP
54	* Alyse Poindexter		5/15	0/0	0/0	10	4	5	9	4	0	2	5	0	21:30
21	Tyeesha Petrie		0/0	0/0	0/0	0	0	0	0	0	0	0	0	0	DNP
	Team						1	1	2						
	<b>Totals</b>		<b>11/42</b>	<b>2/9</b>	<b>5/9</b>	<b>33</b>	<b>11</b>	<b>15</b>	<b>26</b>	<b>10</b>	<b>4</b>	<b>8</b>	<b>5</b>	<b>2</b>	<b>160</b>
	<b>2 PT FG</b>		1st Half	6/21	28.6%	2nd Half	5/21	23.8%	Game	11/42	26.2%				
	<b>3 PT FG</b>		1st Half	0/2	0.00%	2nd Half	2/7	28.6%	Game	2/9	22.2%				
	<b>Free Throws</b>		1st Half	5/7	71.4%	2nd Half	0/2	0.00%	Game	5/9	55.6%				

### Home: Elizabethtown Lady Panthers

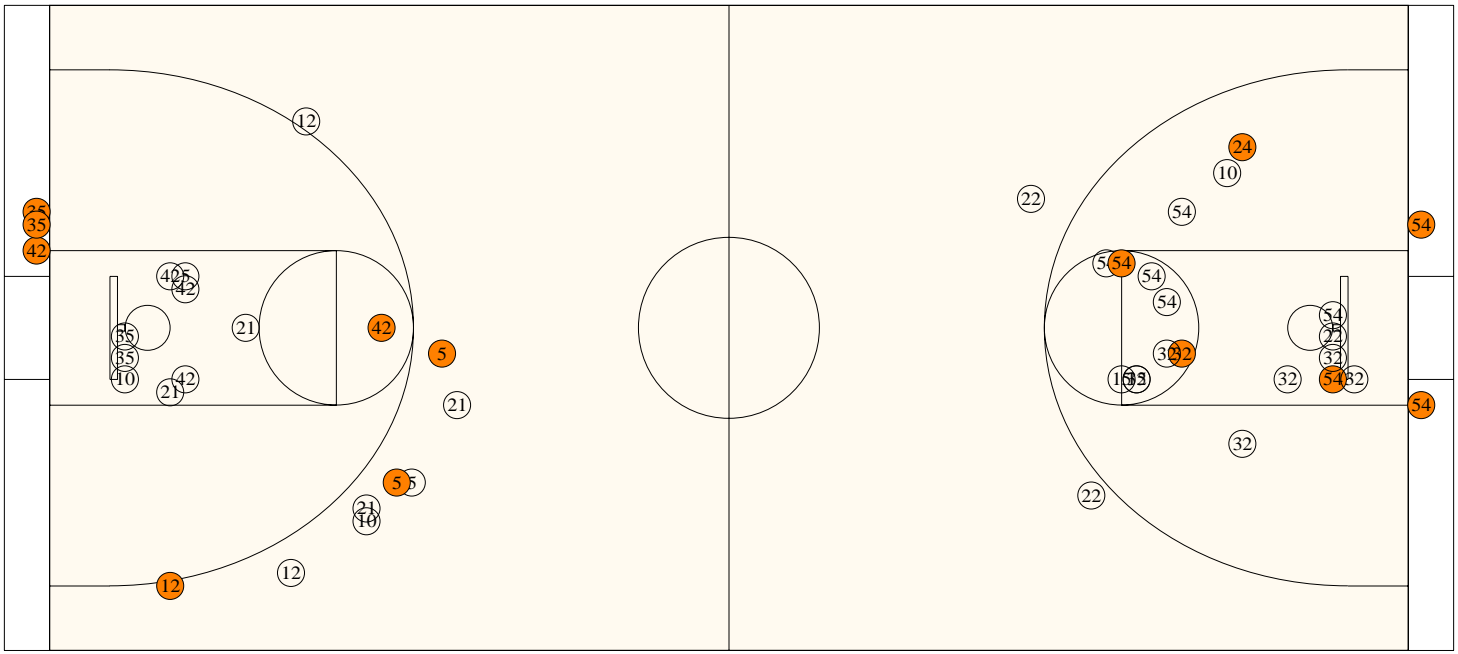
##	Name	P	FG	3 Pt	FT	PTS	ORB	DRB	TR	PF	AST	TO	BS	ST	MIN
3	Chelsea Kauffeld		0/0	0/0	0/0	0	0	0	0	0	0	1	0	0	1:19
5	* Dorian Downs		0/1	3/4	0/0	9	0	2	2	1	0	1	0	0	28:23
10	* Terra Lucas		0/1	0/1	4/4	4	1	2	3	3	5	1	0	2	17:26
12	Tara Gilpin		0/0	1/3	0/0	3	1	0	1	0	1	0	0	0	17:06
14	Hannah Hart		0/0	0/0	0/0	0	0	2	2	0	0	1	0	0	3:37
15	* Adelaide Luckett		5/7	0/0	2/4	12	0	2	2	1	0	1	0	0	22:15
21	* Natalie Greenwell		1/3	1/3	0/0	5	2	3	5	3	4	2	1	1	26:50
24	Kymber Berrow		0/0	0/0	0/0	0	0	0	0	0	0	0	0	0	1:19
25	Denisha Nichols		0/0	0/0	0/0	0	0	0	0	0	0	1	0	0	1:19
35	Jasmine Deaderick		2/6	0/0	1/2	5	3	3	6	1	1	0	0	0	15:59
42	* Alex Jones		8/15	0/0	3/3	19	1	8	9	3	3	1	2	0	21:37
50	Darian Ditto		0/0	0/0	0/0	0	0	1	1	0	0	0	0	0	2:50
	Team						0	4	4						
	<b>Totals</b>		<b>16/33</b>	<b>5/11</b>	<b>10/13</b>	<b>57</b>	<b>8</b>	<b>27</b>	<b>35</b>	<b>12</b>	<b>14</b>	<b>9</b>	<b>3</b>	<b>3</b>	<b>160</b>
	<b>2 PT FG</b>		1st Half	4/13	30.8%	2nd Half	12/20	60.0%	Game	16/33	48.5%				
	<b>3 PT FG</b>		1st Half	3/9	33.3%	2nd Half	2/2	100%	Game	5/11	45.5%				
	<b>Free Throws</b>		1st Half	5/6	83.3%	2nd Half	5/7	71.4%	Game	10/13	76.9%				

	HEND		ELIZ		HEND		ELIZ		HEND		ELIZ	
Free Throw Pts	5	10	3Pt Points	6	15	Pts/Possession	0.63	1.12				
Pts off Turnovers	3	11	2nd Chance Points	10	8	Pts off Bench	7	8				
Total Rebounds	26	35	Team Rebounds	2	4	Dead Ball Reb	4	3				
Off Rebound %	28.9	34.8	Def Rebound %	65.2	71.1	Total Rebound %	42.6	57.4				
3Pt Efficiency	+4.8	+13.1	Def. Stops	24	35	Pts/Shot	0.60	1.14				
Technical Fouls	<b>HEND</b>		None		<b>ELIZ</b>		None					
Officials	Will Jones, Mike Melton, John Boylan, Jr.											

	Qtr 1	Qtr 2	Qtr 3	Qtr 4	OT 1	OT 2	OT 3	OT 4	Total
<b>Henderson County Lady Colonels</b>	6	11	8	8	0	0	0	0	<b>33</b>
<b>Elizabethtown Lady Panthers</b>	9	13	23	12	0	0	0	0	<b>57</b>

**Largest Lead** ELIZ 57 HEND 30 (27 pts) **Lead Changes** 1 **Number of Ties** 2  
**Comments:** None

**FIRST HALF**



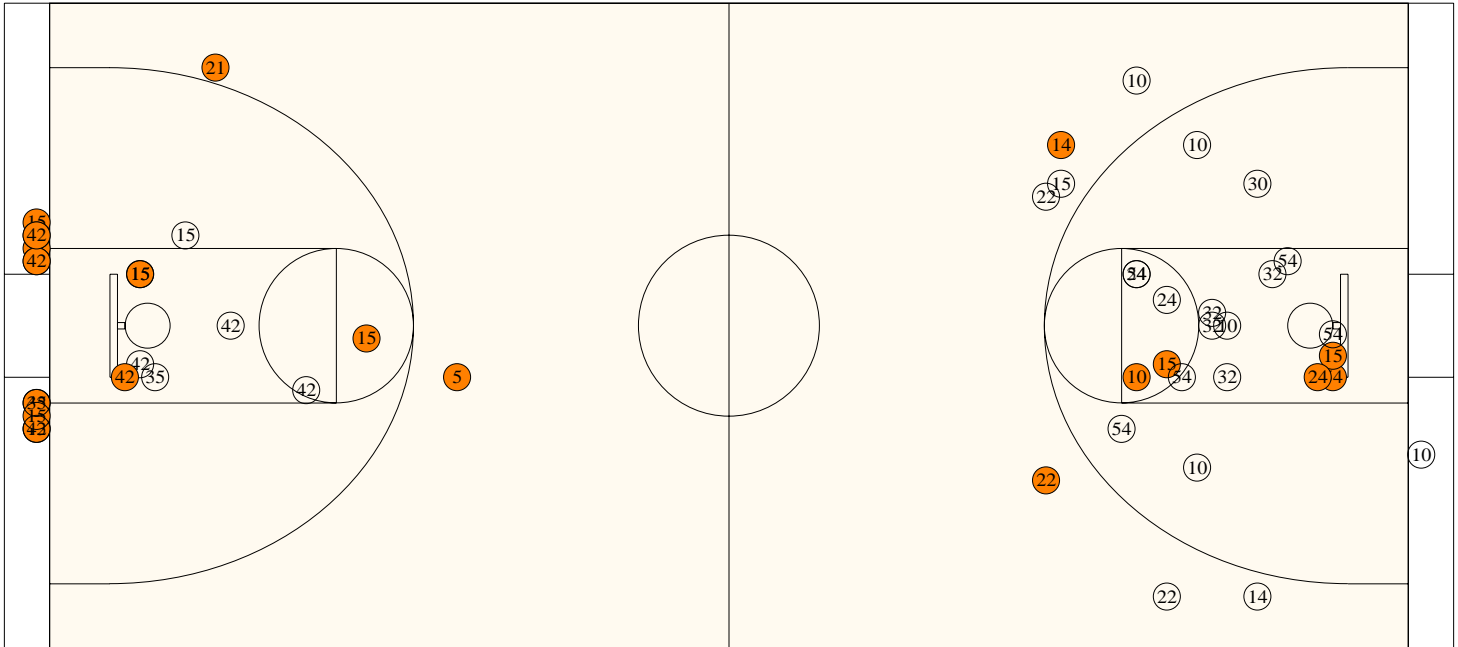
**Elizabethtown**

Shooting	Pts	Pts
2FG 4/13 (30.8%)	8	Pts/Shot 0.88
3FG 3/9 (33.3%)	9	2nd Eff Pts 4
TFG 7/22 (31.8%)		Pts off TO's 4
FT 5/6 (83.3%)	5	3Pt Eff +12.8
Scoring Distribution: 2FG 36.4% 3FG 40.9% FT 22.7%		

**Henderson County**

Shooting	Pts	Pts
2FG 6/21 (28.6%)	12	Pts/Shot 0.65
3FG 0/2 (0.00%)	0	2nd Eff Pts 4
TFG 6/23 (26.1%)		Pts off TO's 3
FT 5/7 (71.4%)	5	3Pt Eff -19.0
Scoring Distribution: 2FG 70.6% 3FG 0.0% FT 29.4%		

**SECOND HALF**



**Elizabethtown**

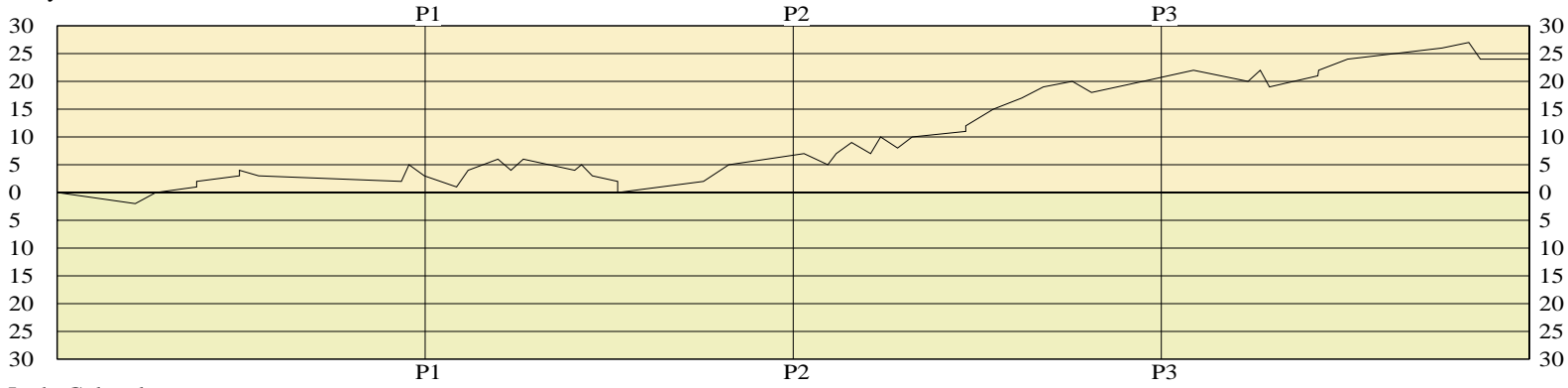
2FG 12/20 (60.0%)	24	Pts/Shot 1.40
3FG 2/2 (100%)	6	2nd Eff Pts 4
TFG 14/22 (63.6%)		Pts off TO's 7
FT 5/7 (71.4%)	5	3Pt Eff +60.0
Scoring Distribution: 2FG 68.6% 3FG 17.1% FT 14.3%		

**Henderson County**

2FG 5/21 (23.8%)	10	Pts/Shot 0.55
3FG 2/7 (28.6%)	6	2nd Eff Pts 6
TFG 7/28 (25.0%)		Pts off TO's 0
FT 0/2 (0.00%)	0	3Pt Eff +12.7
Scoring Distribution: 2FG 62.5% 3FG 37.5% FT 0.0%		

Lady Panthers

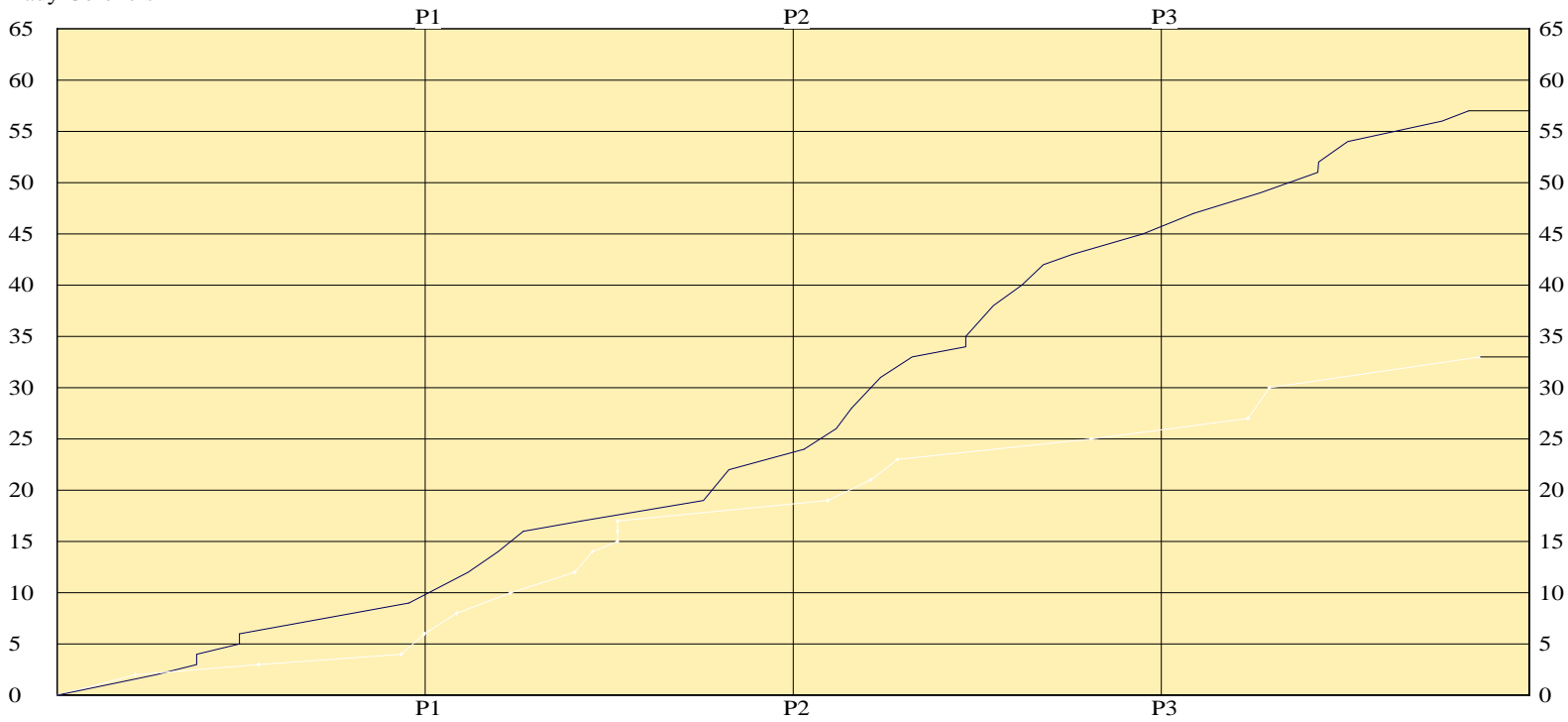
LEAD TIMELINE



Lady Colonels

Lady Panthers  
 Lady Colonels

SCORING TIMELINE



Largest Lead ELIZ 57 HEND 30 (27 pts) Lead Changes 1 Number of Ties 2

KHSAA Basketball - Play by Play Report - Scoring Only (pg 1)

Elizabethtown Lady Panthers vs. Henderson County Lady Colonels

Date: 03/14/2009 Time: 12:15 pm CST Site: Diddle Arena-Bowling Green, KY Attendance: 4654

Name	Action	Action	Score	Clock	Diff	Name	Action	Action
			0-2	1	6:18	-2 (L1)	A Poindexter	FG Made
A Jones	Layup Made		2-2	1	5:51	(T1)		
T Lucas	FT Made		3-2	1	4:58	+1 (L2)	A Poindexter	Personal Foul
T Lucas	FT Made		4-2	1	4:58	+2		
A Jones	FT Made		5-2	1	4:02	+3	A Barnes	Personal Foul
A Jones	FT Made		6-2	1	4:02	+4		
			6-3	1	3:37	+3	A Barnes	FT Made
			6-4	1	0:31	+2	D Dixon	FT Made
D Downs	3Pt Made	A Jones Assist	9-4	1	0:21	+5		
			9-6	1	0:01	+3	A Poindexter	Putback Made

End of Period Summary Lady Panthers 9 Lady Colonels 6

Largest Lead: Lady Panthers 9 Lady Colonels 4 (5 pts)

Lead Changes: 2 Ties: 1

Lead in Period: Lady Panthers 9 Lady Colonels 4 (5 pts)

Lead Changes: 1 Ties: 1 (this period)

2 for 1 oppo pts

Turnovers

2 for 2 oppo pts

4 for 2 pts

2nd Chances

2 for 2 pts

2/10 for 20.0 %

Field Goals

2/9 for 22.2 %

4/4 for 100 %

Free Throws

2/4 for 50.0 %

			9-8	2	7:19	+1	D Dixon	FG Made
T Gilpin	3Pt Made	N Greenwell Assist	12-8	2	7:04	+4		
A Jones	FG Made	J Deaderick Assist	14-8	2	6:25	+6		
			14-10	2	6:08	+4	A Poindexter	Layup Made
J Deaderick	Layup Made	N Greenwell Assist	16-10	2	5:52	+6		D Dixon Assist
			16-12	2	4:45	+4	A Poindexter	Layup Made
J Deaderick	FT Made		17-12	2	4:36	+5		
			17-14	2	4:22	+3	S Garrett	FG Made
D Downs	Personal Foul		17-15	2	3:49	+2	O Fruit	FT Made
			17-16	2	3:49	+1	O Fruit	FT Made
			17-17	2	3:49	(T2)	O Fruit	FT Made
J Deaderick	Layup Made	N Greenwell Assist	19-17	2	1:57	+2		
D Downs	3Pt Made	T Gilpin Assist	22-17	2	1:24	+5		

End of Period Summary Lady Panthers 22 Lady Colonels 17

Largest Lead: Lady Panthers 14 Lady Colonels 8 (6 pts)

Lead Changes: 2 Ties: 2

Lead in Period: Lady Panthers 14 Lady Colonels 8 (6 pts)

Lead Changes: 0 Ties: 1 (this period)

2 for 2 oppo pts

Turnovers

1 for 2 oppo pts

3 for 2 pts

2nd Chances

4 for 2 pts

5/12 for 41.7 %

Field Goals

4/14 for 28.6 %

1/2 for 50.0 %

Free Throws

3/3 for 100 %

A Luckett	Layup Made	T Lucas Assist	24-17	3	7:46	+7		
			24-19	3	7:15	+5	A Poindexter	Putback Made
A Luckett	FG Made	T Lucas Assist	26-19	3	7:04	+7		
N Greenwell	Layup Made		28-19	3	6:44	+9		
			28-21	3	6:19	+7	A Barnes	FG Made
D Downs	3Pt Made	T Lucas Assist	31-21	3	6:06	+10		
			31-23	3	5:44	+8	K Norman	Putback Made
A Jones	Layup Made		33-23	3	5:25	+10		
T Lucas	FT Made		34-23	3	4:15	+11		
T Lucas	FT Made		35-23	3	4:15	+12		

**KHSAA Basketball - Play by Play Report - Scoring Only (pg 2)**

**Elizabethtown Lady Panthers vs. Henderson County Lady Colonels**

**Date: 03/14/2009 Time: 12:15 pm CST Site: Diddle Arena-Bowling Green, KY Attendance: 4654**

Name	Action	Action	Score	Clock	Diff	Name	Action	Action
N Greenwell	3Pt Made	A Jones Assist	38-23	3	3:39	+15		
A Lockett	Layup Made	A Jones Assist	40-23	3	3:02	+17		
A Jones	Layup Made		42-23	3	2:34	+19		
A Lockett	FT Made		43-23	3	1:56	+20		
			43-25	3	1:31	+18	S Garrett	FG Made
A Lockett	Layup Made		45-25	3	0:24	+20		

**End of Period Summary Lady Panthers 45 Lady Colonels 25**

<b>Largest Lead: Lady Panthers 43 Lady Colonels 23 (20 pts)</b>	<b>Lead Changes: 2 Ties: 2</b>
<b>Lead in Period: Lady Panthers 43 Lady Colonels 23 (20 pts)</b>	<b>Lead Changes: 0 Ties: 0 (this period)</b>
<b>2 for 0 oppo pts</b>	<b>5 for 7 oppo pts</b>
<b>0 for 2 pts</b>	<b>4 for 6 pts</b>
<b>9/12 for 75.0 %</b>	<b>4/15 for 26.7 %</b>
<b>3/4 for 75.0 %</b>	<b>0/0 for 0.00 %</b>

Name	Action	Action	Score	Clock	Diff	Name	Action	Action
A Jones	Layup Made	N Greenwell Assist	47-25	4	7:18	+22		
			47-27	4	6:07	+20	K Norman	FG Made
A Jones	Layup Made		49-27	4	5:51	+22		
			49-30	4	5:39	+19	O Fruit	3Pt Made
A Jones	Layup Made	T Lucas Assist	51-30	4	4:36	+21		A Barnes Assist
A Jones	FT Made		52-30	4	4:35	+22	A Poindexter	Personal Foul
A Jones	Putback Made		54-30	4	3:57	+24		
A Lockett	FG Made	T Lucas Assist	56-30	4	1:54	+26		
A Lockett	FT Made		57-30	4	1:19	+27		
			57-33	4	1:04	+24	E Fruit	3Pt Made
								A Langley Assist

**End of Period Summary Lady Panthers 57 Lady Colonels 33**

<b>Largest Lead: Lady Panthers 57 Lady Colonels 30 (27 pts)</b>	<b>Lead Changes: 2 Ties: 2</b>
<b>Lead in Period: Lady Panthers 57 Lady Colonels 30 (27 pts)</b>	<b>Lead Changes: 0 Ties: 0 (this period)</b>
<b>3 for 0 oppo pts</b>	<b>0 for 0 oppo pts</b>
<b>1 for 2 pts</b>	<b>1 for 0 pts</b>
<b>5/10 for 50.0 %</b>	<b>3/13 for 23.1 %</b>
<b>2/3 for 66.7 %</b>	<b>0/2 for 0.00 %</b>

**OFFICIAL BASKETBALL BOX SCORE**

03/14/2009 12:15 pm CST

Diddle Arena  
Bowling Green, KY

Henderson County Lady Colonels vs Elizabethtown Lady Panthers

Final Box Score

No.	Henderson County Lady Colonels	Total FG		3-point		Free throw		Rebounds			F	TP	A	TO	BLK	STL	MIN
		FG	FGA	FG	FGA	FT	FTA	Off	Def	Tot							
10	Ariel Barnes	1	7	0	1	1	2	0	1	1	2	3	1	1	0	1	30:41
12	Kayla Jennings	0	0	0	0	0	0	0	0	0	0	0	0	0	0	0	1:19
14	Ellie Fruit	1	2	1	2	0	0	0	0	0	0	3	0	0	0	0	1:19
15	Krista Norman	2	5	0	1	0	0	1	1	2	0	4	0	1	0	0	30:41
20	Lauren Rodgers	0	0	0	0	0	0	0	0	0	0	0	0	0	0	0	0:58
32	Danielle Dixon	1	11	0	0	1	4	4	4	8	2	3	2	2	0	0	31:19
22	Olivia Fruit	1	6	1	5	3	3	1	2	3	1	6	0	1	0	1	28:16
54	Alyse Poindexter	5	15	0	0	0	0	4	5	9	4	10	0	2	5	0	21:30
24	Sara Garrett	2	4	0	0	0	0	0	1	1	1	4	0	1	0	0	11:16
23	Alexia Langley	0	0	0	0	0	0	0	0	0	0	0	1	0	0	0	1:19
30	Kristen Oliver	0	1	0	0	0	0	0	0	0	0	0	0	0	0	0	0:41
33	Chelsea Stone	0	0	0	0	0	0	0	0	0	0	0	0	0	0	0	0:41
44	Breasha Bostic	0	0	0	0	0	0	0	0	0	0	0	0	0	0	0	DNP
21	Tyeesha Petrie	0	0	0	0	0	0	0	0	0	0	0	0	0	0	0	DNP
<b>Team (Included in Totals)</b>								<b>1</b>	<b>1</b>	<b>2</b>			<b>0</b>				
<b>Totals</b>		<b>13</b>	<b>51</b>	<b>2</b>	<b>9</b>	<b>5</b>	<b>9</b>	<b>11</b>	<b>15</b>	<b>26</b>	<b>10</b>	<b>33</b>	<b>4</b>	<b>8</b>	<b>5</b>	<b>2</b>	<b>160</b>
Total FG%: 1st half 6 - 23 (26.1%) 2nd half 7 - 28 (25.0%) Game 13 - 51 (25.5%) 3Pt FG%: 1st half 0 - 2 (0.00%) 2nd half 2 - 7 (28.6%) Game 2 - 9 (22.2%) FT%: 1st half 5 - 7 (71.4%) 2nd half 0 - 2 (0.00%) Game 5 - 9 (55.6%)												Deadball rebounds 4					

No.	Elizabethtown Lady Panthers	Total FG		3-point		Free throw		Rebounds			F	TP	A	TO	BLK	STL	MIN
		FG	FGA	FG	FGA	FT	FTA	Off	Def	Tot							
3	Chelsea Kauffeld	0	0	0	0	0	0	0	0	0	0	0	0	1	0	0	1:19
5	Dorian Downs	3	5	3	4	0	0	0	2	2	1	9	0	1	0	0	28:23
10	Terra Lucas	0	2	0	1	4	4	1	2	3	3	4	5	1	0	2	17:26
12	Tara Gilpin	1	3	1	3	0	0	1	0	1	0	3	1	0	0	0	17:06
14	Hannah Hart	0	0	0	0	0	0	0	2	2	0	0	0	1	0	0	3:37
21	Natalie Greenwell	2	6	1	3	0	0	2	3	5	3	5	4	2	1	1	26:50
15	Adelaide Luckett	5	7	0	0	2	4	0	2	2	1	12	0	1	0	0	22:15
42	Alex Jones	8	15	0	0	3	3	1	8	9	3	19	3	1	2	0	21:37
35	Jasmine Deaderick	2	6	0	0	1	2	3	3	6	1	5	1	0	0	0	15:59
50	Darian Ditto	0	0	0	0	0	0	0	1	1	0	0	0	0	0	0	2:50
24	Kymber Berrow	0	0	0	0	0	0	0	0	0	0	0	0	0	0	0	1:19
25	Denisha Nichols	0	0	0	0	0	0	0	0	0	0	0	0	1	0	0	1:19
<b>Team (Included in Totals)</b>								<b>0</b>	<b>4</b>	<b>4</b>			<b>0</b>				
<b>Totals</b>		<b>21</b>	<b>44</b>	<b>5</b>	<b>11</b>	<b>10</b>	<b>13</b>	<b>8</b>	<b>27</b>	<b>35</b>	<b>12</b>	<b>57</b>	<b>14</b>	<b>9</b>	<b>3</b>	<b>3</b>	<b>160</b>
Total FG%: 1st half 7 - 22 (31.8%) 2nd half 14 - 22 (63.6%) Game 21 - 44 (47.7%) 3Pt FG%: 1st half 3 - 9 (33.3%) 2nd half 2 - 2 (100%) Game 5 - 11 (45.5%) FT%: 1st half 5 - 6 (83.3%) 2nd half 5 - 7 (71.4%) Game 10 - 13 (76.9%)												Deadball rebounds 3					

Technical Fouls: None

Attendance: 4654

Officials: Will Jones, Mike Melton, John Boylan, Jr.

Score by Period	1st	2nd	3rd	4th	Final	Record	Overall	Conf
Henderson County Lady Colonels	6	11	8	8	33	Lady Colonels		
Elizabethtown Lady Panthers	9	13	23	12	57	Lady Panthers		

<b>Lady Panthers</b>	<b>Lady Colonels</b>	<b>Lady Panthers</b>	<b>Lady Colonels</b>	<b>Lady Panthers</b>	<b>Lady Colonels</b>
Points off Turnovers	11 3	Second Effort Points	8 10	Bench Points	8 7
Points in the Paint	26 12	3 Point Points	15 6	Free Throw Points	10 5
3pt Efficiency	+13.1 +4.8	Points/Shot	1.14 0.60	Defensive Stops	35 24
Largest Lead	57 30 (27 pts)	Lead Changes	1	Number of Ties	2

Game comments: None